



Streetlight.Vision

Smart City Central Management Software

With increasing pressure to manage limited budgets and resources, cities and utilities are looking for solutions to drive efficiencies and improve quality of service for local stakeholders. Public lighting can be a drain on resources, consuming as much as 40% of a municipality's energy budget. Connected lighting systems can lower energy consumption, reduce maintenance costs, and enhance wellbeing for residents and businesses. This digital infrastructure can also provide a foundation for enabling advanced smart city use cases. With a diverse range of devices and applications coming online, cities should demand a comprehensive back office software that supports modern, connected lighting while providing flexibility to manage new devices as their needs evolve.

Streetlight.Vision (SLV) is the world leading smart city central management software (CMS), chosen by more than 500 communities to control more than 3 million intelligent devices worldwide. SLV pushes the capabilities of outdoor lighting control by providing more benefits to cities with advanced asset management, analytics and control to improve energy efficiency,

optimize system performance, accelerate outage restoration, and streamlining integration with existing business process.

Built on widely adopted industry standards, TALQ and Open Smart City Protocol, SLV provides cities with the ability to connect and control a variety of smart city use cases from an open ecosystem of providers. More than 40 outdoor lighting control systems utilize SLV, including power line and wireless technologies, ensuring that cities have the flexibility to choose the ideal network solution for their local environment.

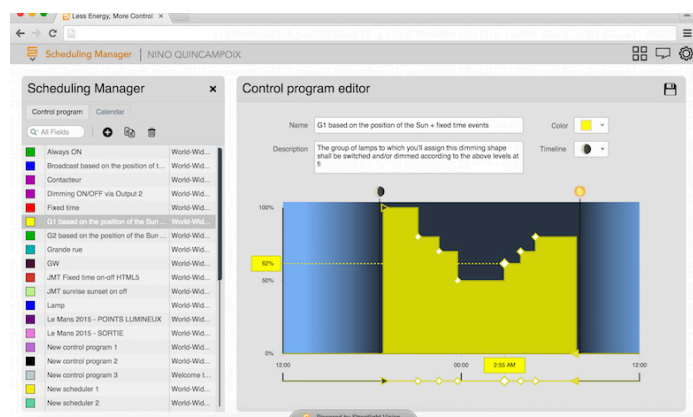


Figure 1: Scheduling Manager Allows for Flexible Individual or Group Lighting Control.

Benefits

- » Proven technology: Deployed in more than 500 projects worldwide
- » Scalable: Supports deployments of all sizes from city parks to the world's largest networked lighting project with more than 500,000 lights
- » Extensible: Open ecosystem utilizes widely adopted industry standards to enable seamless integration with a variety of solution providers and outdoor lighting and control systems

EXTENDED SUPPORT FOR SMART CITY DEVICES

SLV 7, the latest version of SLV, expands on existing features to enable cities to leverage an existing IoT networks that expand into a true smart city platform that can virtually support any kind of smart city device, as well as enable customers and partners to develop new and innovative solutions. With extensibility to connect and control advanced smart city solutions, SLV empowers cities with nearly limitless extensibility to enable solutions best-of-breed technology providers.

Key Features

- » **Security:** SLV provides a user- and role-based access control
- » **Asset and Inventory Management:** SLV enables users to create, import, export and modify device attributes, search for devices, and develop inventory reports. SLV also supports the ANSI C137.4 (draft) standard for automated collection of luminaire and driver attributes
- » **Desktop Applications:** Simplify usability and user profile configuration and creates a platform for future smart city applications

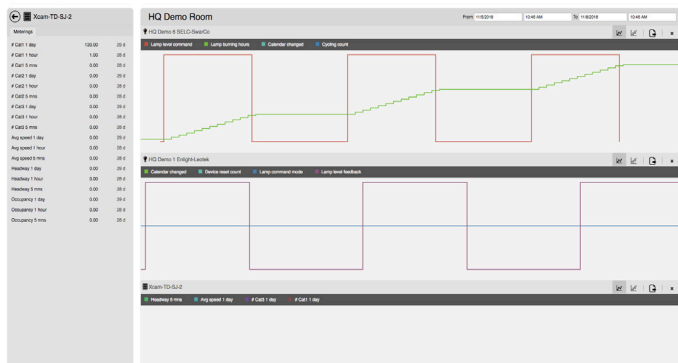


Figure 2: Data history allows users to track and analyze devices over time

- » **Advanced Analytics:** SLV provides tools to analyze the inventory and the behavior of each device or group of devices through canned, custom and scheduled reports
- » **Flexible Command and Control:** SLV provides on/off/dim by device or group of nodes as well as flexible control programs and scheduling features that can be calendar or astro-based
- » **Alarm Management:** Proactively alerts users of issues that arise in the field such as lamp failure, location change or power supply failures
- » **Data History:** SLV collects and stores important data elements and alarms/events which can help identify problems before failures occur
- » **Integration with Existing Business Processes:** SLV provides flexible API's used to send notifications, data, and provide services to third-party applications such as customer service systems, geographical information systems and workforce management
- » **Smart City Device Support:** SLV supports 40 outdoor lighting control system vendors and an expanded range of smart city devices such as traffic cameras, environmental sensors, electrical vehicle charging stations, electrical meters, water meters and more

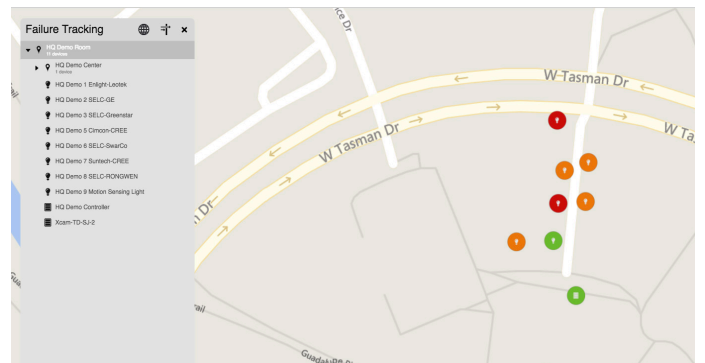


Figure 4: Map-based display of alarms and events

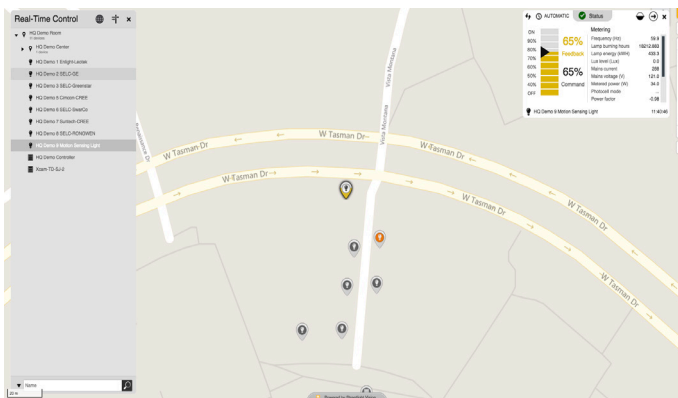


Figure 3: Real-time control for immediate dimming and data collection

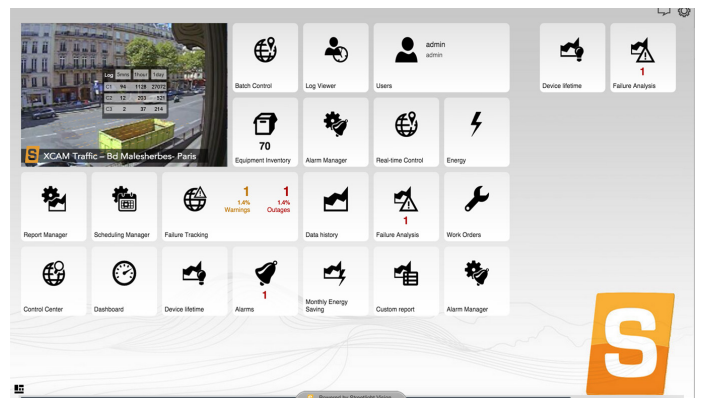


Figure 5 : Extensible platform to support smart cities applications



Join us in creating a more resourceful world.
To learn more visit itron.com

While Itron strives to make the content of its marketing materials as timely and accurate as possible, Itron makes no claims, promises, or guarantees about the accuracy, completeness, or adequacy of, and expressly disclaims liability for errors and omissions in, such materials. No warranty of any kind, implied, expressed, or statutory, including but not limited to the warranties of non-infringement of third party rights, title, merchantability, and fitness for a particular purpose, is given with respect to the content of these marketing materials. © Copyright 2019 Itron. All rights reserved. 101694PO-01 1/19

CORPORATE HQ

2111 North Molter Road
Liberty Lake, WA 99019 USA

Phone: 1.800.635.5461

Fax: 1.509.891.3355